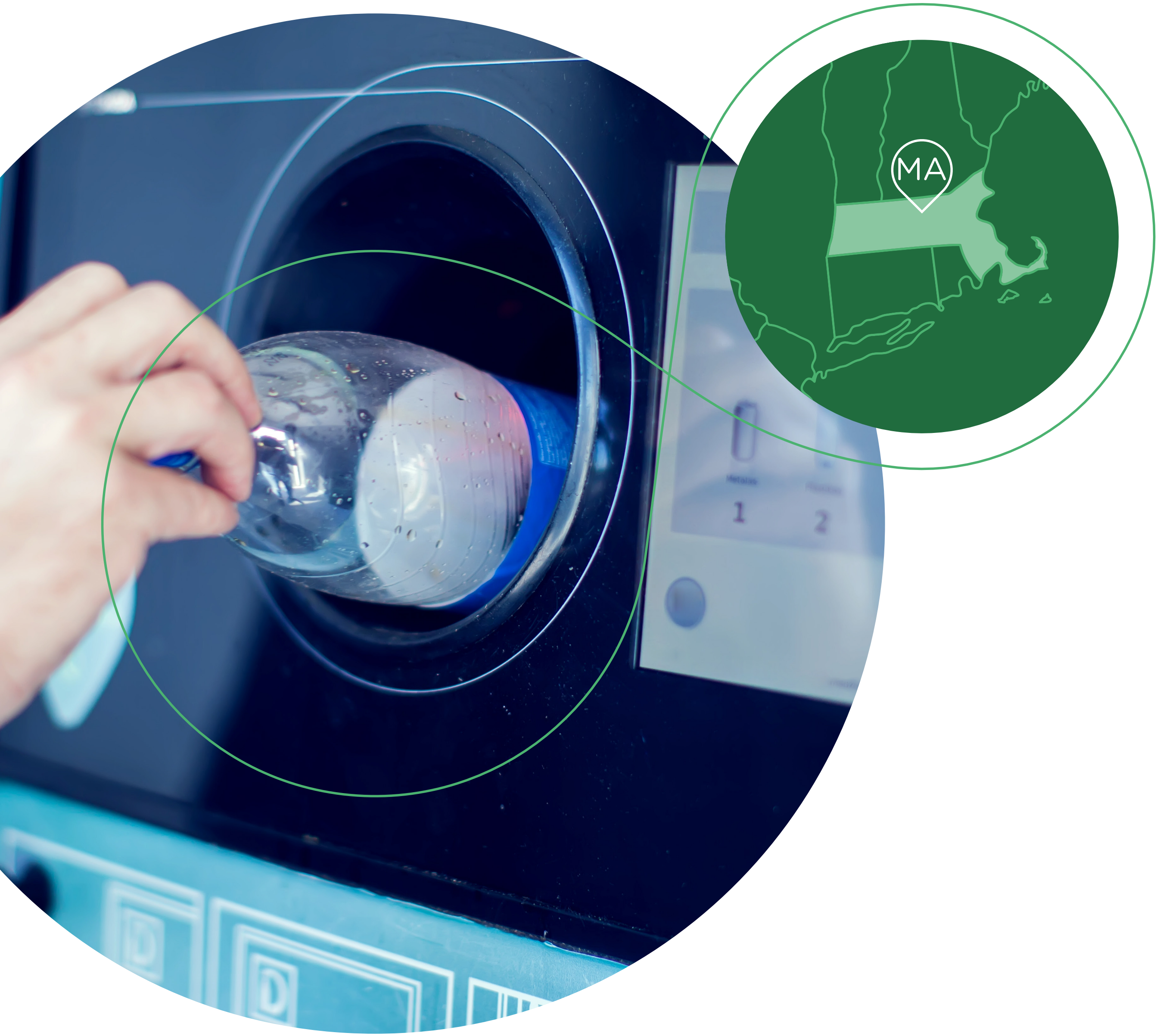


Modernizing Massachusetts’ Bottle Bill



When Massachusetts passed a bottle bill in 1982, it was one of the first in the country. Today, the Commonwealth has an opportunity to address severe environmental challenges more effectively by adopting an even better and truly modern bottle bill. Implementing ten high-performance principles for modernizing deposit return systems (DRS) would go further.

BENEFITS DELIVERED BY MODERNIZED DRS



ENVIRONMENTAL



ECONOMIC



SOCIAL

+ SAVES MILLIONS FOR MA TAXPAYERS & CITIES/TOWNS

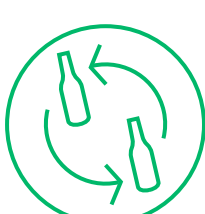
NEW RESEARCH ON MASSACHUSETTS SHOWS THE IMPACT:

138,000
METRIC TONS
OF CO₂



reduced annually in reduced greenhouse gas emissions—the equivalent of 30,012 cars off Massachusetts roads each year¹

2.4
BILLION



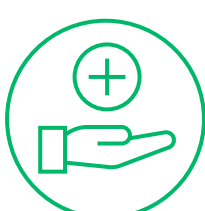
additional beverage containers recycled each year, yielding 130,000 more tons of high-value material annually

\$26.7+
MILLION
IN SAVINGS



for Commonwealth cities and towns by redirecting recyclables away from costly curbside collection systems

\$206
MILLION



added to MA’s economy annually in Gross Value Added (GVA)³

85%
LITTER
REDUCTION



of beverage containers², creating far more livable communities —rural, urban, and suburban— in the Commonwealth

2,500
TOTAL JOBS



that bring additional economic benefits through taxes and spending by these workers

HOW SHOULD A MODERN DEPOSIT RETURN SYSTEM WORK?



Accessible & Accountable



Industry Financed



Well Managed & Regulated



Increases access for consumers

with 3,557 projected locations to return containers so redemption becomes part of one’s daily routine



Funded by producers

so MA consumers or their cities and towns do not pay for the management of these materials



Government plays an oversight and enforcement role

to ensure performance standards are met by producers and retailers and enforce a 90% collection target in Massachusetts



Includes more beverages containers

leading to nearly 17 million “nips” removed from roadsides and landfill streams



Creates efficiencies

by establishing clear standards, oversight, and enforcement that optimize performance and reduce fraud



48% to 90% jump

in redemption rate for containers included in the MA deposit return system



Producers will pay

\$69 million annually - not MA municipalities and consumers, as they do now

¹ Calculated at: <https://www.epa.gov/energy/greenhouse-gas-equivalencies-calculator>

² “National Litter Study”, Keep America Beautiful. 2021 <https://kab.org/litter-study/>.

³ Gross value added (GVA) is an economic productivity metric that measures the contribution of the DRS to the state.